



BEACON FEN ENERGY PARK

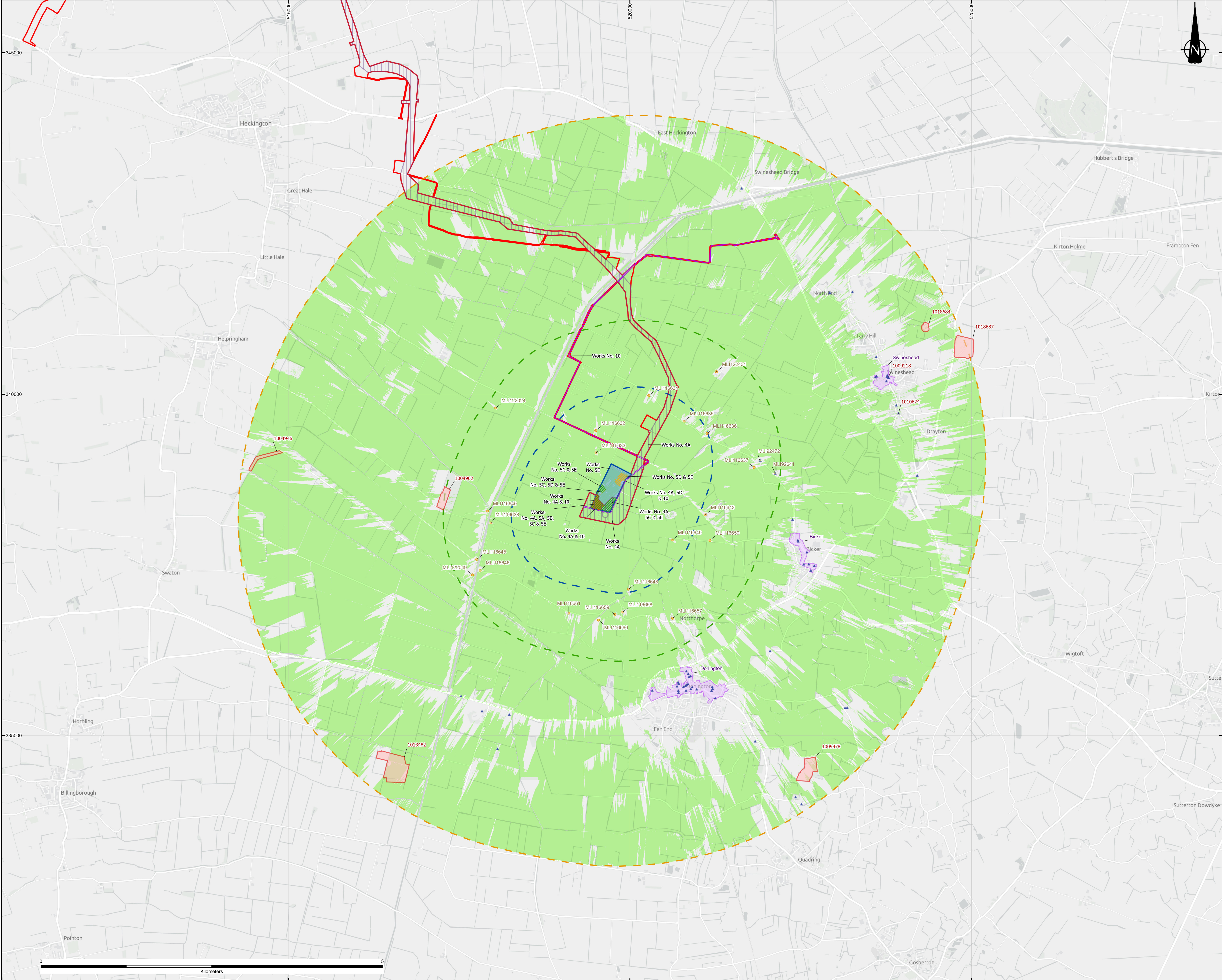
Planning Inspectorate Reference: EN010151

Change Request Environmental Statement Addendum Figure 6.2 Designated Heritage Assets
and ZTV

Document Reference: 10.13

December 2025





- KEY**
- DCO Order Limits
 - 1 km Study Area
 - 2 km Study Area
 - 5 km Study Area
 - Screened Zone of Theoretical Visibility - Proposed Change Pylon
 - Scheduled Monuments
 - Conservation Areas
 - Listed Buildings
 - Non-Designated Built Heritage Asset Polygon
 - Non-Designated Built Heritage Asset Point
- Change Request Working Areas**
- 4A Cable Route
 - 5A Generation Bay and 5B Substation Extension
 - 5C Cable Sealing End and New Pylon
 - 5D Compound
 - 5E Further Works including Drainage and Landscaping
 - 10 Access

Notes:

Excluding the DCO Order Limits, boundaries shown are indicative.

DCO Order Limits provided by Ardent Management on 04/02/2025.

Change Request Working Areas obtained from "LCA-2023-01-BeaconFen_Works Plan-0.1-Change Request Clarification DRAFT.dwg" provided by the Client on 20/11/2025.

Historic Environment Record Data provided by Lincolnshire County Council 2024-2025.

© Historic England 2025. Contains Ordnance Survey data © Crown copyright and database right 2025.

Proposed scheme for the Proposed Change Pylon Zone of Theoretical Visibility (ZTV) is derived from 15m spaced points across Work Area 5C. The Proposed Change pylon is modelled 55.205 m above ground level. The Change Request details were obtained from "Draft Work Plan Areas 14-10-25", provided by the Client.

© Environment Agency copyright and/or database right 2022. All rights reserved. Contains public sector information licensed under the Open Government Licence v3.0

Generated using a 2m resolution Digital Surface Model and Digital Terrain Model (DTM)

Zone of Theoretical Visibility (ZTV) raster data was calculated using QGIS 3.34.6 Visibility Analysis tool with observer eye 1.8m above ground.



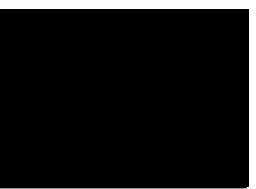
The 1, 2 and 5km study areas is from the Works Areas within the DCO Order Limits south of Bicker Road, where the Proposed Changes are to occur.

Contains OS data © Crown Copyright and database right 2025
Contains data from OS Zoomstack

3	LABEL AND KEY UPDATES		15/12/25	BL	AR	AH
2	ADDITION OF CHANGE REQUEST AREAS AND FIGURE NUMBER, LAYOUT		17/11/25	BL	AR	AH
1	UPDATES		14/11/25	BL	AR	AH
1	FIRST ISSUE		14/11/25	BL	AR	AH

REVISION	DATE	BY	CHKD	APPD
3	15/12/25	BL	AR	AH
2	17/11/25	BL	AR	AH
1	14/11/25	BL	AR	AH

CLIENT	BEACON FEN ENERGY PARK LTD				
PROJECT	BEACON FENN ENERGY PARK				
DRAWING TITLE	FIGURE 6.2 DESIGNATED HERITAGE ASSETS AND ZTV (CHANGE REQUEST)				
DWG NO.	ST19595-526	REV	3	SUIT CODE	--
DWG SIZE	A1	SCALE	1:25,000	DATE	15/12/2025
DRAWN BY	GR	CHECKED BY	AR	APPROVED BY	AH

 		
PART OF		